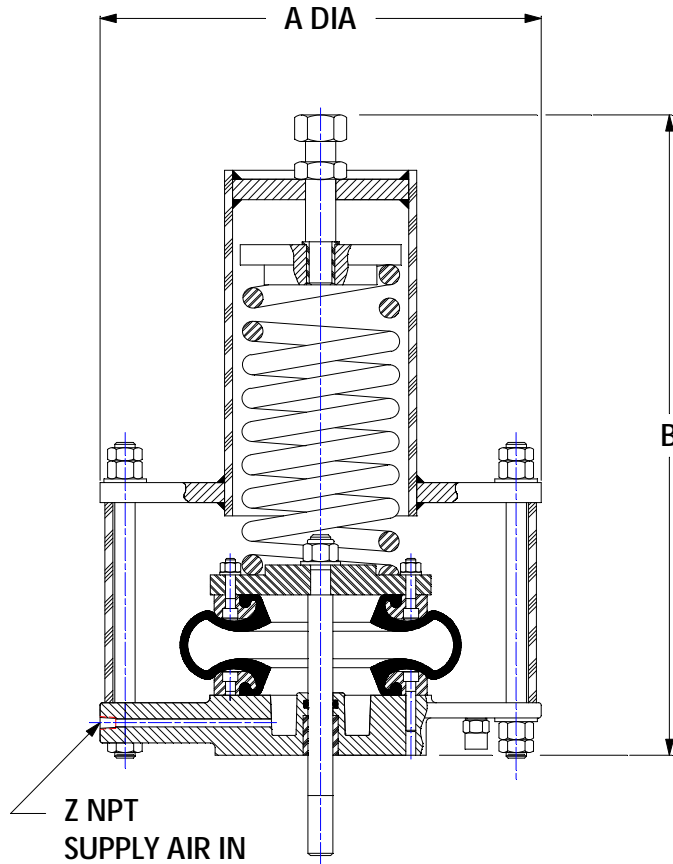
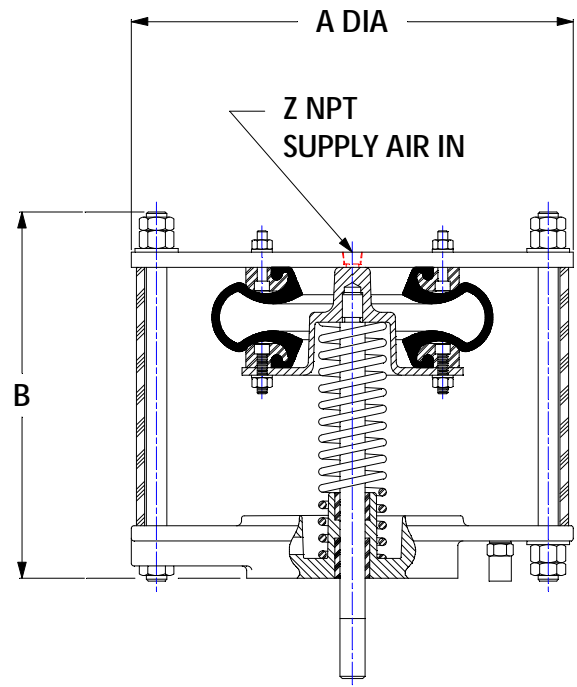


PFO & PFC ACTUATORS

ACTUATOR WEIGHTS AND DIMENSIONS
(All dimensions are in inches and weights are in lbs.)



PFC ACTUATOR



PFO ACTUATOR

| SIZE | 8 | 12 | 21 | 30 | 36 | 40 | 70 | 80 | 120 | 200 |
|--------------|-------|-------|-------|-------|-------|-------|-------|-------|-------|-------|
| A DIA | 7.50 | 11.00 | 11.18 | 13.56 | 14.74 | 19.06 | 16.37 | 19.75 | 23.68 | 31.75 |
| B (PFC) | 10.37 | 22.12 | 27.37 | 34.62 | 37.12 | 62.37 | 50.12 | 52.62 | 59.50 | N/A |
| B (PFO) | 7.15 | 9.12 | 11.00 | 13.00 | 16.25 | | 18.50 | 18.50 | 24.50 | 34.93 |
| Z NPT | 1/4 | | | | 3/8 | | 1/2 | | | |
| WEIGHT (PFC) | 25 | 45 | 70 | 156 | 226 | 300 | 355 | 385 | 450 | N/A |
| WEIGHT (PFO) | 20 | 40 | 46 | 75 | 119 | 130 | 140 | 145 | 200 | 880 |