

ONYX VALVE CO

835 Industrial Hwy
Cinnaminson NJ 08077
Ph: 856 829-2888
Fax: 856 -829-3080
www.onyxvalve.com

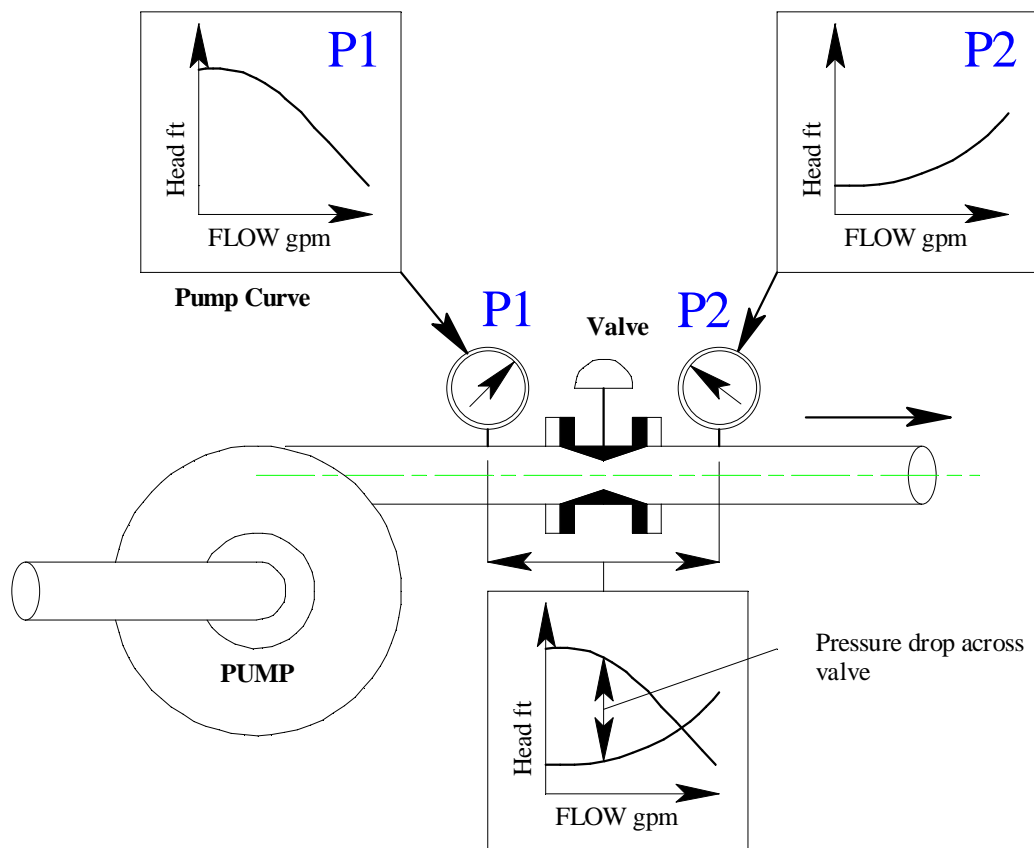
David Gardellin, P. Eng
e-mail: david@onyxvalve.com

Wednesday, January 11, 2012

What is the pressure drop across the valve going to be?

As the valve manufacturer, we can't answer that question. Pressure drop isn't created by the valve; it's created by your process:

The pressure drop across the valve is the difference between the inlet pressure (created by the pump) and the outlet pressure (the result of pipe friction and elevation head).



The inlet pressure is determined by the pump curve (or the tank head in a gravity system).

The pipe friction downstream of the valve determines the outlet pressure.

The difference between these two pressures is the drop across the valve.