

Series WCV Check Valve

Wafer-Style Check Valve

- The Wafer-style series WCV Check valve is an entirely new valve design specifically engineered for water application. The WCV Check valve operates solely on line pressure and back pressure to open and close, no outside energy source is required. As line pressure builds, the elastomeric flapper disc is pushed away, allowing the water to pass. The memory of the rubber will cause the flapper disc to return flat, and back pressure will seal the flapper against the plate to prevent back-flow. The WCV Check valve is designed to be inserted between two mating flanges.



- Material of construction

Flapper disc : Pure gum rubber

EPDM(NSF certified), Buna-N(NSF certified)

Disc plate : Epoxy coated carbon steel (standard)

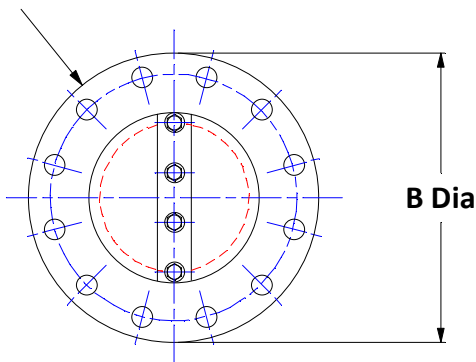
304 or 316 stainless steel (optional)

Maximum Backpressure Limits

- 0" → 3" = 175 psi
- 4" → 8" = 150 psi
- 10" → 12" = 100 psi
- 14" → 24" = 75 psi
- 30" and Larger = 50 psi

- Installation : For horizontal pipe, orient the center rib in vertical position as shown below.

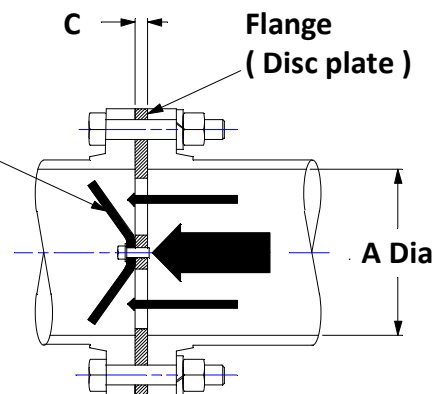
Flange is 125#ANSI standard Flat Face



Flapper disc View is rotated for pictorial clarification



Updated 2-26-2015



All dimensions are in inches.

Size	4	5	6	8	10	12	14	16	18	20	24	30	36
A	4.00	5.00	6.00	7.90	10.00	12.00	13.25	15.25	17.25	19.25	23.25	29.25	35.25
B	9.00	10.00	11.00	13.50	16.00	19.00	21.00	23.50	25.00	27.50	32.00	38.75	46.00
C	0.50				0.62			0.75			1.00		
Cv	225	400	575	1200	1800	2520	3200	4200	5400	7500	11000	18000	26000

Dimensions are subject to change without notice.